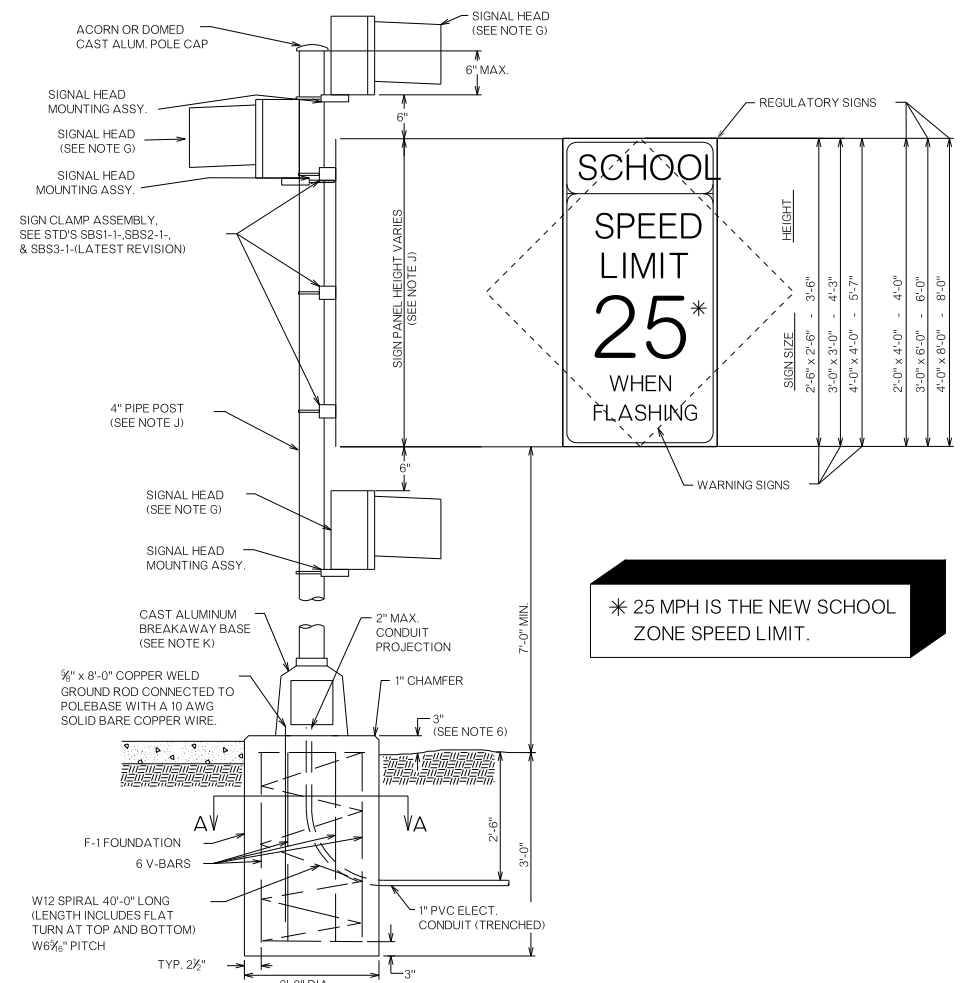


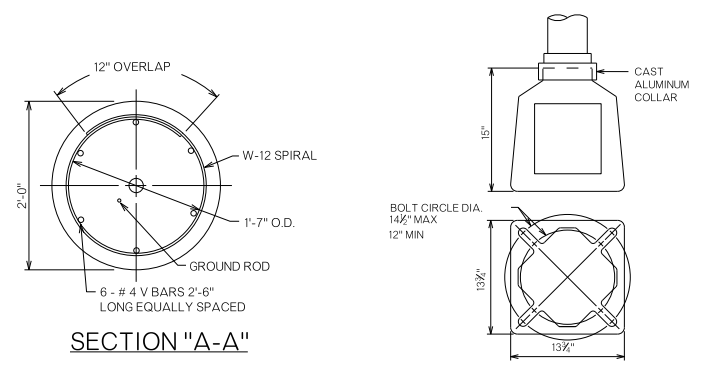
REVISIONS		
REV. NO.	DESCRIPTION	DATE

TRI-HEAD SOLAR BEACON DETAILS

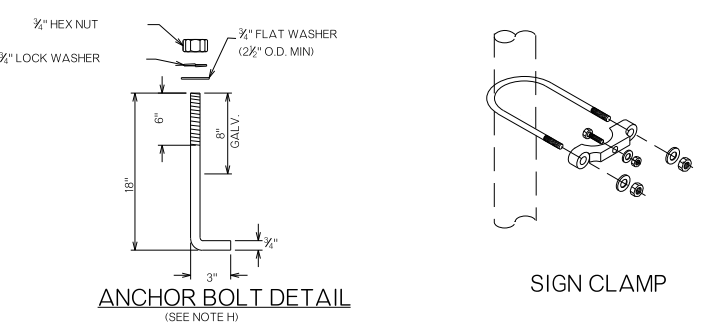


* 25 MPH IS THE NEW SCHOOL ZONE SPEED LIMIT.

TYPICAL FLASHING REGULATORY / WARNING SIGN
STRUCTURAL CONCRETE = 0.35 CY
REINFORCING STEEL = 27 LBS

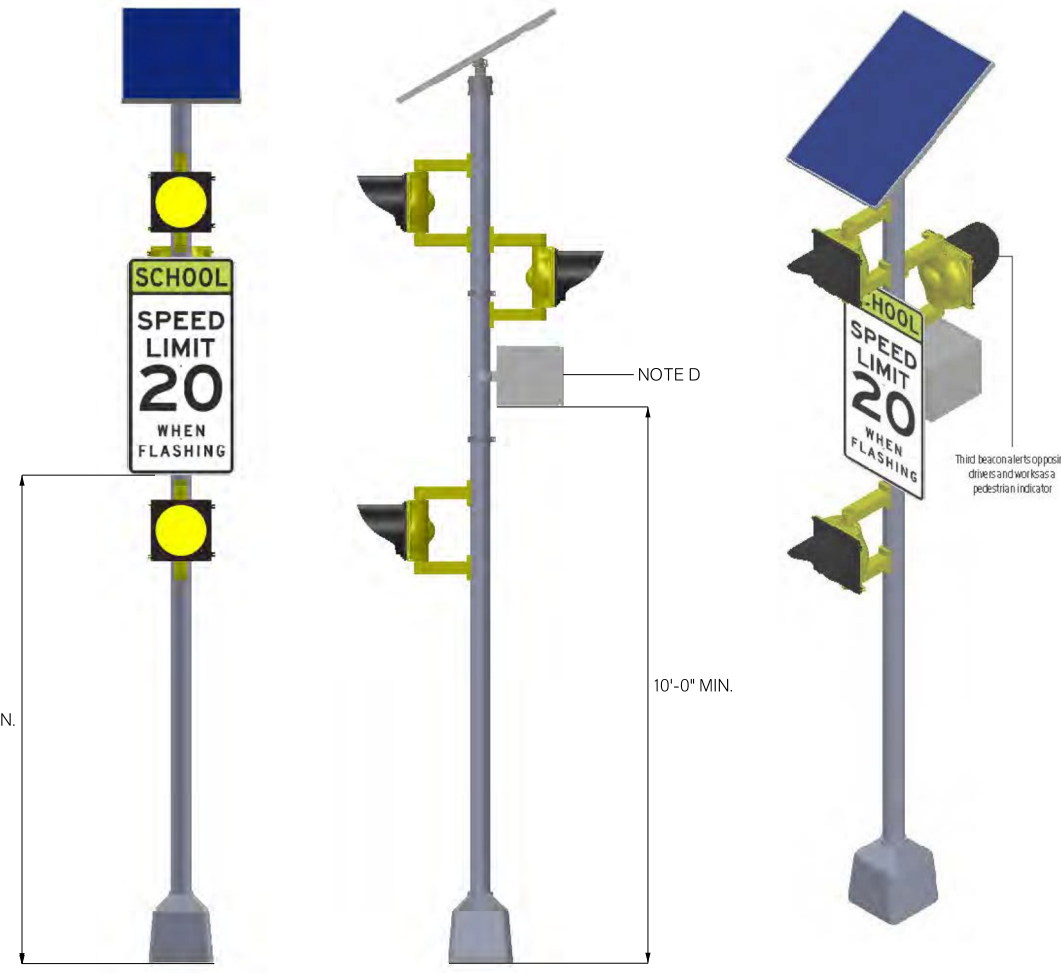


SECTION "A-A"



ANCHOR BOLT DETAIL
(SEE NOTE H)

SIGN CLAMP

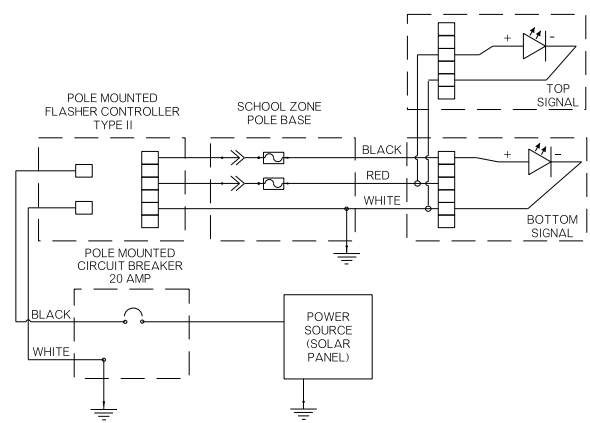


NOTE D

This beacon alerts opposing drivers and works as a pedestrian indicator.

MATERIAL SPECIFICATIONS

- A. ELECTRICAL CONDUIT AND FITTINGS SHALL BE IN ACCORDANCE WITH SECTION 802 OF THE 2009 STANDARD SPECIFICATIONS AND MAY BE EITHER RIGID GALV. STEEL OR SCH. 40 PVC PLASTIC.
- B. ELECTRICAL CONDUCTORS FROM THE POWER SERVICE INSULATOR TO THE CONTROLLER AND TO THE FLASHING SIGNAL HEADS SHALL BE A NO. 10 AWG. TYPE THHN. ELECTRICAL WIRING FROM THE FOOTING TO THE SIGNAL HEADS SHALL BE INSTALLED WITHIN THE SUPPORTING SIGN POLE.
- C. ALL CONDUITS OR STRAPS SHALL BE GALVANIZED MALLEABLE IRON.
- D. THE FLASHER CONTROLLER SHALL BE A TYPE I FLASHER FOR 24 HOUR OPERATION OR A TYPE II FLASHER FOR TIMED OPERATION, IN A CAST ALUMINUM, NEMA 3R RAIN-TIGHT, LOCKABLE ENCLOSURE. CONTROLLER SHALL CONFORM TO SECTION 827 OF THE 2009 STANDARD SPECIFICATIONS.
- E. THE ENCLOSURE FOR THE CIRCUIT BREAKER SHALL BE A N.E.M.A. 3R RAIN-TIGHT ENCLOSURE, AND SHALL BE LOCKED IN ACCORDANCE WITH THE POWER COMPANY REQUIREMENTS. CIRCUIT BREAKERS SHALL BE I-POLE, 120 VOLT, RATED AT 20 AMP.
- F. SIGNAL HEADS USED SHALL BE ONE-WAY, ONE SECTION (WITH YELLOW LENS AND TUNNEL VISOR (V-1), CONFORMING TO SECTION 831 OF THE 2009 STANDARD SPECIFICATIONS. SIGNAL HEAD SIZE SHALL BE EITHER A S-8 (8") OR S-22 (12") AS SPECIFIED ON THE PLANS.
- G. ANCHOR BOLTS SHALL BE ASTM A-572 OR A-36, MODIFIED TO 50,000 PSI YIELD STRENGTH WITH A HEAVY DUTY FLAT WASHER, HEAVY DUTY LOCK WASHER AND HEAVY DUTY HEX NUT, ALL GALVANIZED AS PER ASTM A-153.
- H. THE FUSE HOLDER LOCATED IN THE POLE BASE SHALL BE WATERPROOF, IN-LINE, BREAK-A-WAY TYPE INCLUDING A 10 AMP KTK FUSE.
- I. THE PIPE POST SHALL BE 4" @ 10.79 SCH. 40 GALV. STEEL. PIPE LENGTH WILL VARY DUE TO SIGN SIZES AND FIELD CONDITIONS. THE CONTRACTOR SHALL VERIFY AND ADJUST THE PIPE POST LENGTH AS REQUIRED. MINIMUM LENGTH OF 12', UNLESS OTHERWISE SPECIFIED IN THE SIGNING SCHEDULE. SPUN ALUMINUM SCH.40 OR 80 PIPE, AS REQUIRED, MAY BE USED AS AN ALTERNATE POST MATERIAL.
- J. ALL COST OF THE FHWA APPROVED SQUARE CAST ALUMINUM BASE WITH A PLASTIC DOOR, GROUNDING LUG AND A CAST ALUMINUM BASE COLLAR SHALL BE INCLUDED IN THE PRICE BID FOR REGULATORY OR WARNING SIGN ASSEMBLY.
- K. COST OF CONCRETE AND STEEL IN THE FOOTING SHALL BE INCLUDED IN THE PRICE BID OF REGULATORY OR WARNING SIGN ASSEMBLY PAY ITEM. FOR CONCRETE AND STEEL QUANTITIES SEE STANDARD FGS2-1 (LATEST REVISION).



DIVISION 3 SH-01	PONTOTOC COUNTY	DETAIL:	CLD	06/17
TRI-HEAD SOLAR BEACON DETAILS		CHECK:	GF	06/17
		ENGINEER:	KCD	06/17
		GROUP:	ABRAHAM EM: MAAROUF	
STATE OF OKLAHOMA	DEPARTMENT OF TRANSPORTATION	JOB/PIECE NO. 33253(04)	SHEET NO. AT02	